

General Notes

- THIS DRAWING IS COPYRIGHT AND THE PROPERTY OF PARKVIEW LIFTING GEAR ENGINEERING LTD. IT MUST NOT BE COPIED, IN WHOLE OR IN PART, USED OR REPRODUCED IN ANY MANNER WITHOUT PRIOR WRITTEN CONSENT OF THE COMPANY. ANY COPIES OF THIS DRAWING MUST INCLUDE A COPY OF THIS NOTICE.
- DO NOT SCALE FROM THIS DRAWING IN EITHER DIMENSIONS ONLY. TO CHECK DRAWING HAS BEEN PRINTED TO THE INTENDED SCALE THIS BAR SHOULD BE 38MM LONG @ A1 ON 25MM LONG @ A3.

- ALL DIMENSIONS IN MILLIMETRES (MM).
- ALL WELDS CONTINUOUS 6 FILET (U.O.S.).
- ALL WORKS MATERIALS: FABRICATION WELDING, BRONZE ETC.) TO BE IN ACCORDANCE WITH THE 5TH EDITION OF THE BRITISH STANDARD BS5950 PART 1:2008.
- CONSTRUCTION CLASS: S275
- CONSTRUCTION CLASS: S275
- PRODUCTION CATEGORY: P02
- MATERIALS SPECIFICATION (MTC)
 - ALL STEELWORK & PLATES: S275-A1 TO BS EN 10225-2
 - ALL ROLL-UP SECTIONS: S355-AH1, TO BS EN 10210-1
 - ALL BOLTS, NUTS & WASHERS: GRADE 8.8 TO EN 1591-1 ZINC PLATED.

- TOLERANCES
 - THE FABRICATOR MUST PERFORM DIMENSIONAL CHECKS TO ENSURE THE TOLERANCES BELOW:
 - Machining: ±0.10
 - Fabrication: ±0.20
 - 1000 - 2000: ±0.8
 - >2000: ±1.0
 - Flange Cut Holes:
 - ±0.25: ±0.5
 - 0.25 - 0.75: ±1.0
 - 0.75 - 2.25: ±0.75
 - 2.25 - 4.40: ±1.0
- DEBURR & CLEAN
- PAINT UNDERCOAT PRIMER AND TOP COAT GLOSS TRAFFIC YELLOW RAL1025 (U.O.S.).
- TEMPORARY WORKS: PAINT GREY UNDERCOAT PRIMER.

PRELIMINARY ISSUE

Rev.	Date	Drawn	Eng	Approval
0	13/12/17	TDC	NTS	Issued for APPROVAL

FLG Services

FLG is a division of



U41 13
Star Business Centre
Mackay Way
Rusham
Epsom Surrey TW20 1BP
T: 0845 872 5505
www.parkviewengineering.com

Lifting Beam
SWL 20 TONNE
PTL 30.4 TONNE

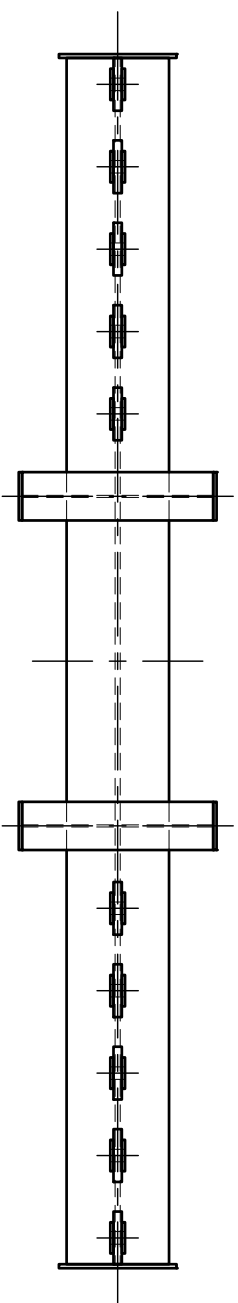
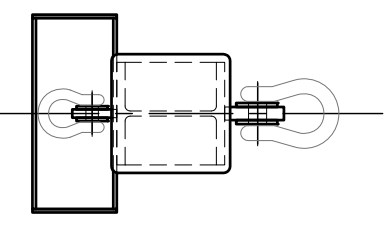
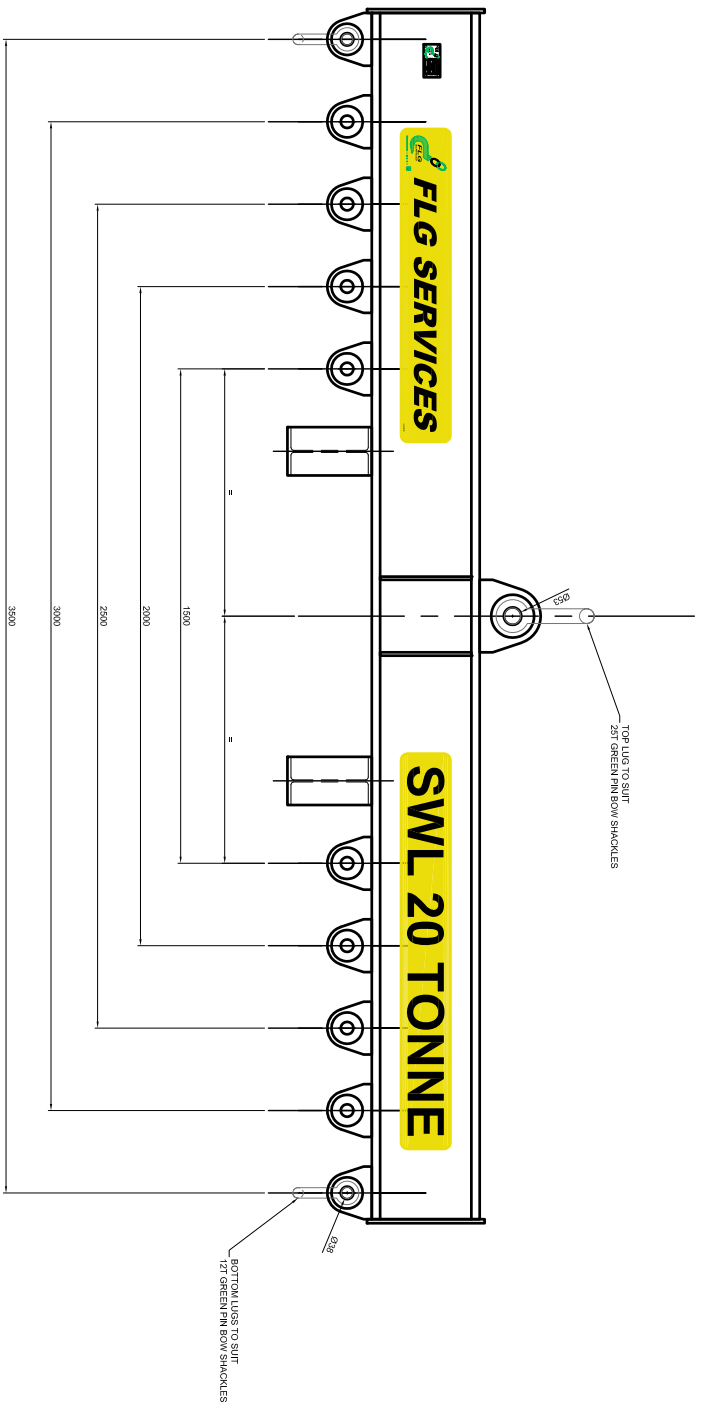
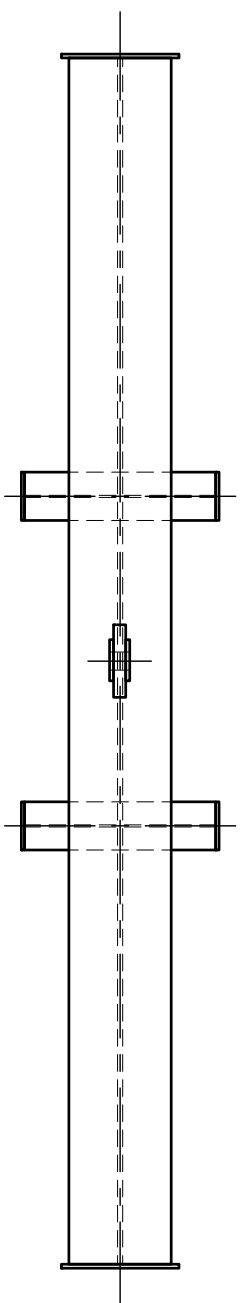
Drawn	Eng	Approved
TDC	TDC	

Scale: NTS Date: 13/12/17

Comment No.

Drawing No. **990241 - 1** Sheet No. **P0**

Revision



CUSTOMER'S APPROVAL

TICK ONE BOX ONLY

APPROVED - COMMENCE WITH MANUFACTURE

APPROVED - WITH MARK-UP AMENDMENTS

NOT APPROVED - RESUBMIT

SIGNATURE: DATE: