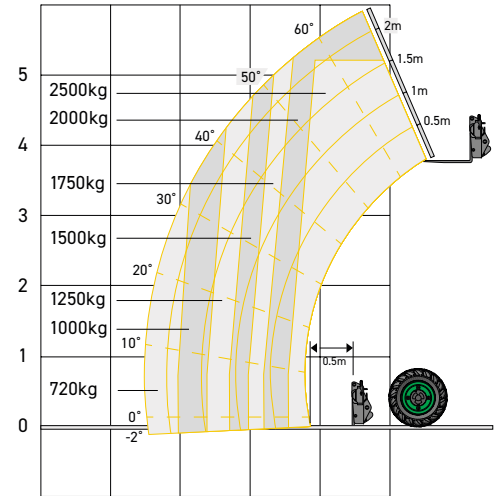
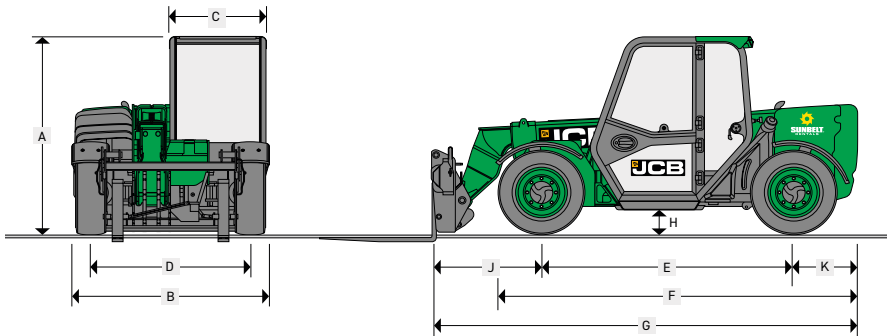


JCB 6m Electric Compact Telehandler



Static Dimensions

A	Overall height*	m	1.89
B	Overall width (over tyres)*	m	1.84
C	Inside width of cab	m	0.88
D	Front track	m	1.53
E	Wheelbase	m	2.39
F	Overall Length to front tyres	m	3.38
G	Overall length to front carriage	m	4
H	Ground clearance	m	0.22
J	Front wheel centre to carriage	m	1.02
K	Rear wheel centre to rear face	m	0.6
	Outside turn radius (over tyres)	m	3.7
	Carriage roll back angle	degrees	11
	Carriage dump angle	degrees	114
	Weight	kg	5200
	Tyres	industrial	12x16.5

*Dependant upon tyre specified.

Power Source

Battery type	Lithium-ion
Gross capacity	24kWh
System voltage	96V

Service Fill Capacities

Hydraulic system	litres	45
------------------	--------	----

Axles

Front and rear drive JCB axles: epicyclic hub reduction drive/steer axles.

Lift Performance

Maximum lift capacity	kg	2500
Lift capacity to full height	kg	2000
Lift capacity at full reach	kg	720
Lift height	m	6
Reach at maximum lift height	m	-0.15
Maximum forward reach (to front of carriage)	m	3.5
Complies with stability test EN1459-1		

Charging

On-board charger allowing direct connection to AC mains power supply.

On-board charging 3kW (240V / 16A)	25 - 80%:	5hrs
	0 - 100%:	8hrs

Rapid charging 18kW (415V / 32A)	25 - 80%:	60mins
	0 - 100%:	110mins

Supercharge 27kW (415V / 63A)	25 - 80%:	35mins
	0 - 100%:	60mins

Charging cable plug type	16A 230V (Blue)
--------------------------	-----------------

Brakes

Service brakes: Hydraulically operated self-adjusting.

Parking brake: SAHR Handbrake self adjusting operated by in-cab switch.

Boom And Carriage

Boom is manufactured from high tensile steel. Low maintenance, hard wearing pads. JCB Q-Fit, JCB compact toolcarrier, Skid-Steer.

JCB 6m Electric Compact Telehandler

Noise And Vibration

		Measurement conditions
Noise at the operator station (LpA)	75	Determined in accordance with the test method defined in EN12053.
Noise emission from the machine (dB(A))	93.6	Guaranteed equivalent sound power (external noise) determined in accordance with the dynamic test conditions defined in 2000/14/EC.
Whole body vibration (m/s ²)	1.24	ISO 2631-1:1997 normalised to an 8h reference period and based upon a test cycle defined in SAE J1166.
Hand-arm vibration (m/s ²)	1.27	ISO 5349-2:2001 dynamic test conditions.

Motors

	Traction	Hydraulic
Motor type	3 phase AC (induction)	3 phase AC (induction)
Motor power	17kW (S2)	22kW (S3)
Max speed	6000rpm	3000rpm
Peak torque	220Nm	130Nm

Hydraulics

Internal gear pump, fitted with suction strainer and filter. Smart hydraulics on lower and retract with separate filtration on pilot services. Optional boom end aux services.

Operating system pressure	bar	245
Max flow at system pressure	ltr/min	65
Hydraulic cycle times		Seconds
Boom raise		9.9
Boom lower		6.2
Boom extend		10.3
Retract		10
Bucket dump		4.5
Bucket crowd		4.5

Transmission

Permanent 4WD transmission with independent drive motor and regenerative braking. Travel Speed 15kph.

		Forward	Reverse
Speed	kph	15	15

Electrics

System voltage	Volt	12V/96V
----------------	------	---------

Full LED road lighting. Reversing light. Direction indicators. Hazard warning. Reverse alarm. Optional rise over ambient white noise.

JCB 6m Electric Compact Telehandler

Steering

Hydrostatic power steering with power track rods on both axles.

Three steer mode options: Front wheel steer, all wheel steer, crab steer, operated from in the cab by a selection lever.

Cab

Quiet, safe and comfortable cab conforms to ROPS ISO 3471 and FOPS ISO 3449. Tinted glass all round, heated front, rear and right-hand side, laminated roof screen. Roof bars, front screen and roof screen wipers and heater/screen demister. Rear opening window with wash/ wipe. Battery charge, hourmeter, road speed indicator, clock and inclinometer. Adjustable, heated air suspension seat, tilt steer column, SAHR park brake, floor mounted throttle and brake pedals.

Hydraulic controls: Single lever servo joystick, incorporating forward/neutral/reverse, with progressive extend/retract and auxiliary.

Load Moment Indicator: Automatic eye level audio-visual load moment indicator warning system receiving a signal from a load sensor on the rear axle. This system continuously monitors the machine's forward stability and leaves the operator in control at all times.

*Adaptive Load Control for EU territories conforms to EN15000.